



CORECO

Medical Lab

Chiller and freezers cabinets for
laboratories and **pharmacies**

Technical catalog 20**24**



PROFESSIONAL REFRIGERATED UNITS FOR MEDICAL & CLINICAL USE:

...when a refrigerator is much more than just
a refrigerator...

Bio-medical refrigerators and freezers are designed and manufactured specifically for the storage of the **THERMOLABILE** products. These are substances that are subject to destruction, decomposition, or change in response to heat, such as **medicines, vaccines, reagents and physiological samples**.

Research centres, laboratories, retail and wholesale pharmacies, hospital pharmacies, outpatient care centres, and patient care areas. These are just some of the places that require a specific type of refrigerator, suitable for safe storage of products, and that **comply with sector-specific requirements and regulations**.

CORECO's complete series of **refrigerators and freezers for medical and clinical applications** provides refrigeration performance that meets the specific temperature uniformity, stability and recovery the **standards** require.

Our products are equipped with features including local or remote **alarms**, continuous temperature **monitoring** (with a back-up **battery** to continue recording data and alarms for up to 12 hours during a power failure), **safety thermostat** (freeze protection), doors with **locks** and several options for improved **management of data** recorded in the unit.

The **CORECO Medical Lab** product series enables **pharmacies, clinics, hospitals and research centres** to comply with guidelines and regulations, making it easier for them to safely store **temperature-sensitive pharmaceuticals, medicines and vaccines** with **professional refrigeration**.



CERTIFICATION: our competitive advantage

We are keenly aware that much of our growth has been due to the **advanced technology** of our products.

We ensure this through strict compliance with international regulations and demanding quality standards with sophisticated control procedures. We carefully **monitor** each step in the manufacturing process to optimise performance and energy consumption.

As part of this strategy, CORECO has achieved Spanish and worldwide approvals and certifications for **hygiene, electrical safety, electromagnetic** and **environmental compatibility**, which allows us to export to most markets worldwide.

The quality and safety of our products and our business are assured by our compliance with these standards, **certified and audited:**

- ISO-9001
- ISO-14001
- OHSAS 18001

and the directives required for the **CE** mark in terms of electrical safety and electromagnetic compatibility, and their equivalents in countries such as Saudi Arabia, Qatar, Kuwait and Russia.



All our products comply with the **CE** mark, tested and certified according to the harmonised standards, especially the electrical safety **(2014/35/EU)** and electromagnetic compatibility **(2014/30/EU)** directives of the European Parliament.



In addition to the CE mark, products manufactured by CORECO have obtained specific hygiene and electrical safety standards for markets where regulations different to European standards are applicable, some as restrictive and demanding as those in force in the U.S.

CERTIFIED LABORATORIES

Our commitment is to offer the **most efficient solutions** in terms of energy consumption and **CO²** emissions, both during the production process and in the equipment after sale.

Using **new types of refrigerants** is a major design change, for manufacturers, distributors and installers. These changes aim to reduce energy consumption by providing customers with increasingly efficient equipment.

This change of **refrigerants** has enabled CORECO to create a product series that is outstanding for its energy efficiency and endorsed by leading European institutes, which has made six of our models market leaders.

To enable this innovation process we have the **most advanced laboratories in Europe**, and a dedicated and experienced team of researchers.

We are confident that **innovation**, after-sales **support** and customer **service** must continue to be the distinguishing feature of CORECO as we **face the challenges** the future holds.



Regulations for REFRIGERATION UNITS FOR MEDICAL USE

In the biological and medical fields there are **five general rules** to be complied with (in addition to country-specific regulations such as those for France and Austria). Standards applicable to both the product and the company that designs, produces and markets it:

- **ISO 13485** is the ISO quality standard for **Medical devices**. It builds on the general **ISO 9001** standard for Quality Systems, adding concrete specifications for equipment design, management, recycling, general control elements for samples and users, and other aspects.
- Directive **93/42/EEC**, is the guideline regulating medical devices. A refrigerator is considered a **medical device** when it stores any product that comes into contact with any human material. For example, blood bags. In this case, the refrigerator is considered a **Class IIa medical device**.
- **EN 60068**, establishes the procedure for recording the internal temperatures of refrigeration units, both of the air and of the product, and determines admissible temperature fluctuations and gradients within very strict series.
- The **DIN 58345** and **DIN 58371** standards specify special requirements for clinical refrigerators. The inside temperature and its monitoring depend on the capacity of the refrigerator; the following specifications are common to both regulations:
 - **Pharmacy (58345):** temperature series +2°C and +8°C (can be monitored)
 - **Blood bank (58371):** temperature series +3°C to +5°C (monitored)
 - Room temperature between +10°C to +35°C
 - Easy to clean and disinfect cabinet
 - Drawers and shelves must support a uniform load of 100 kg/m²
 - Lockable to prevent accidental door opening
 - Power failure alarm must continue for at least twelve hours
 - Visual and audible alarm for temperature outside operating series
 - Current-free alarm contact
 - Safety device to prevent temperature dropping below +2°C
 - Sound pressure less than 60 dB (decibels)

Control and monitoring of TEMPERATURE AND ALARMS

Our series of cabinets for laboratory use and safe storage of vaccines includes **three latest-generation models**, with functions specifically designed for the medical and sanitary sector.

Advanced temperature management and alarms, compliant with regulations for safe storage of vaccines and other medicines, with audible and visual alarms for temperature deviation, door open, sensor failure and high condensation temperature.

Contact for connecting external alarms to the unit and product simulation probe for better management of the refrigeration unit's operation.

EN58345 safety thermostat (standard for vaccines, optional for laboratory). Prevents temperature falling to the freezing point of thermolabile product.

Lithium battery with charger to EN58345 (as standard for vaccines, optional for laboratory). Allows digital monitoring in autonomous operation to continue managing temperature and alarm data.

Touch screen or high definition graphics display, **with IP65 protection**.

Connectivity: local or remote for temperature monitoring and alarms.

Optional: Datalogger with Bluetooth or Wi-Fi connection, HACCP data recording, viewable on screen and downloadable in CSV format using the USB port (on graphic displays only).

Wi-Fi or Bluetooth connection for viewing alarms, temperature data and configuration operations from a PC, **smartphone or tablet**.



graphic display panel with USB



high visibility graphic display panel



compact graphic display panel

product images are for illustration purposes only



connections	BT	Wi-Fi	USB	RS485	TTL
GRAPHICAL	no	opt.	yes	yes	no
HIGH VISIBILITY	opt.	opt.	no	no	yes
COMPACT	opt	opt.	no	no	yes



IoT communication interfaces comply with cybersecurity requirements for networkable products and those specific to medical and healthcare systems.





SIGMA

Display cabinets and under-counter refrigerators, outside and inside manufactured in steel with wear-resistant plastic coating.

Three models, 120, 170 and 320 litres capacity.

The AISI-304 stainless steel support systems make it easy to evenly distribute the height between support brackets and remove parts for cleaning.

Built-in security lock, and shelving system made from epoxy coated sheet steel.

Ventilated evaporators, epoxy coated; uniform distribution of air circulation inside the chamber.

Refrigeration systems with R600a or R290 gas. All components comply with ATEX 014/34/EU regulations.

Control panel with settings for temperature, door open, sensor failure, and high condensation temperature alarms.

Versions available in laboratory configuration and for pharmaceutical use (safe storage of vaccines and thermolabile medicines).



product images are for illustration purposes only

PRO (insulation 85 mm)

High capacity, robust cabinets designed and manufactured for intensive use 24/7, with outside panels in plastic-coated steel and inside in AISI-304 steel.

Three models, 650, 1400 and 2200 litres capacity, with **85 mm** wall insulation.

The AISI-304 stainless steel support systems make it easy to evenly distribute the height between support brackets and remove parts for cleaning.

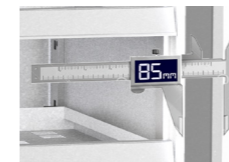
Built-in security lock, and shelving system made from epoxy coated sheet steel.

Ventilated evaporators, epoxy coated; uniform distribution of air circulation inside the chamber.

Refrigeration systems with R290 gas. All components comply with ATEX 014/34/EU regulations.

High visibility control panel with settings for temperature, door open, sensor failure, and high condensation temperature alarms.

Laboratory versions available for above-zero (+2° +8°) and below-zero (-10°C -30°C) temperatures, as well as configurations for pharmaceutical use (storage of vaccines and thermolabile medicines).



ALPHA (insulation 70 mm)

Robust cabinets designed and manufactured for intensive use 24/7, with outside panels in plastic-coated steel and inside in AISI-304 steel.

Three models, 500, 120 and 1850 litres capacity, with **70 mm** wall insulation.

The AISI-304 stainless steel support systems make it easy to evenly distribute the height between support brackets and remove parts for cleaning.

Built-in security lock, and shelving system made from epoxy coated sheet steel.

Ventilated evaporators, epoxy coated; uniform distribution of air circulation inside the chamber.

Refrigeration systems with R290 gas. All components comply with ATEX 014/34/EU regulations.

Control panel with settings for temperature, door open, sensor failure, and high condensation temperature alarms.

Laboratory versions available for above-zero (+2° +8°) and below-zero (-10°C -30°C) temperatures, as well as configurations for pharmaceutical use (storage of vaccines and thermolabile medicines).



medicallab.coreco.es
CORECO
 Medical Lab

General Features of **LABORATORY and VACCINE CABINETS**

Cabinets with capacities from **70 to 2200 litres** designed for safe storage of **vaccines, medicines, reagents and physiological samples** in research centres, hospitals, clinics and pharmacies. We use standards-compliant materials, combining **AISI-304 stainless steel** with **plastic-coated or epoxy-coated steel** with radiused-edge interiors. These cabinets have state-of-the-art refrigeration systems with HC refrigerant gases that will not affect your CO² quota. Our compressors and fans have low electricity consumption and reduced noise emissions (< 60dB). Lighting is by LEDs.

Although **the medical sector has strict temperature requirements** for storage equipment, features such as **visibility, measurement, storage** system, monitoring system **connectivity** are also of paramount importance.

- Temperature monitoring and alarm systems provide the ability to **supervise refrigerators locally and remotely**, with the option of real-time **monitoring** of the conservation status of the products stored, from the screen, with $\pm 0.1^{\circ}\text{C}$ accuracy.

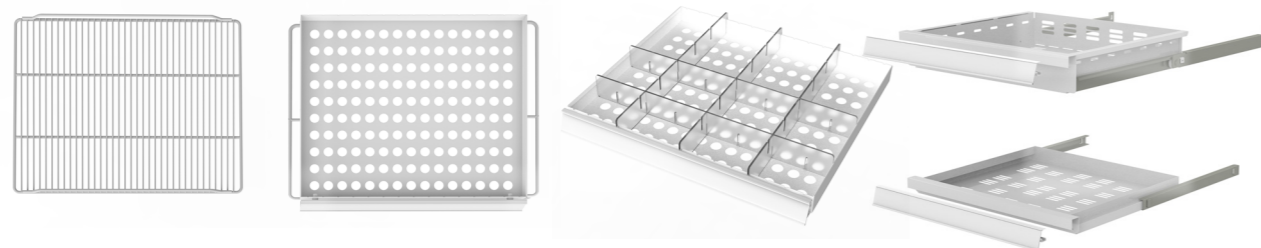


The controls are equipped with **visual and audible alarms**, and a contact for connecting a **remote alarm**. Optionally there is also a **datalogger** with **Bluetooth** and **Wi-Fi** connection, HACCP data recording, viewable on screen and **downloadable in CSV format using the USB port** (on graphic displays only). The versions for vaccines are fitted as standard with a **lithium battery and charger for twelve hours** autonomy for data recording.

Wi-Fi or Bluetooth connection for optional viewing of alarms, temperature data and configuration operations from a **PC, smartphone or tablet**.



- Storage systems using **shelves or drawers** in plastic-coated steel, on stainless steel supports or guides. Storage has a distributed load capacity of **100 kg/m²**. **Label holders** as standard for perforated sheet versions. As an additional option, the drawers and shelves can have **adjustable horizontal and vertical dividers**.



product images are for illustration purposes only

- We offer versions with **windowless or glass doors**, all equipped with a **lock and removable gasket**.

- Some versions have a **recessed inside door panel** for increased insulating surface and a more robust structure.
- The SIGMA, ALPHA and PRO series have **double vertical LED lighting** on each door for optimum interior visibility fitted as standard on all models.



- All units can be supplied with **feet of different sizes**, adjustable height **supports or wheels** for easy **cleaning, maintenance, and movement**.



- **Forced air** ventilation with **temperature monitoring probe**, to maintain interior temperature homogenous throughout.
- **Microswitch for fan cut-off** when door opened.
- Evaporator with **optimised defrosting**.
- **Probe product simulation** to avoid rapid monitor reading fluctuations.
- The LABORATORY- Low temperature versions are fitted with a heating strip in the door frame.
- Models for vaccines have a safety freeze protection thermostat, as standard.
- Interior has a **Ø12mm sealed access port** for connecting an external probe.



- Condensing units with **R600a or R290 compressors** (depending on model), with low power consumption and **sound pressure level of less than 60 dB**.
- All models use components compliant with the **ATEX (014/34/EU) Safety Directive**.
- Includes a tray for automatic evaporation of defrost water.
- Internal temperature series **+2°C +8°C** (refrigeration) and **-10°C -30°C** (low temperature).
- Units to operate at room temperature in the series **+10°C +35°C**, adaptable to more extreme environmental conditions on request.



product images are for illustration purposes only

SIGMA (+2°C +8°C)

120 - 170 - 320 litres

Page **12** Glass door cabinets (+2 +8)

Page **13** Windowless door cabinets (+2 +8)



ALPHA (+2°C +8°C)

500 - 1200- 1850 litres

Page **14** Glass door cabinets (+2 +8)

Page **15** Windowless door cabinets (+2 +8)



PRO (+2°C +8°C)

650 - 1400- 2200 litres

Page **16** Glass door cabinets (+2 +8)

Page **17** Windowless door cabinets (+2 +8)



ALPHA (-10°C -30°)

500 - 1200- 1850 litres

Page **18-19** Windowless door cabinets (-10 -30)



PRO (-10°C -30°)

650 - 1400- 2200 litres

Page **20-21** Windowless door cabinets (-10 -30)





MLBV-120



MLBV-170



MLBV-320

images shown in the table above are for models with standard equipment and fittings

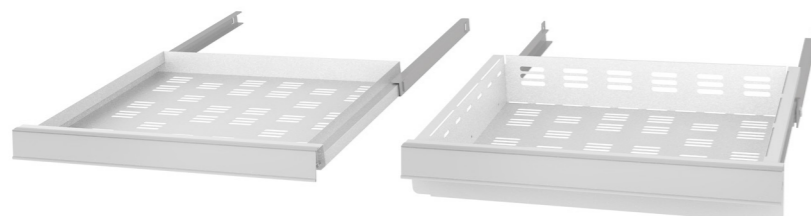
model	series °C	length (mm)	height (mm)	depth (mm)	insulation (mm)	volume (litres)	shelves	lock	digital control					refrigeration equipment				
									battery 12 h	visual alarm	audible alarm	remote alarm contact	product simulator probe	freeze protection thermostat	gas	consum. W/h	voltage	room temperature*
MLBV-120	+2°C +8°C	645	805	640	40	125	2	yes	opt.	yes	yes	yes.	yes	opt.	R290	170	230V-50Hz	+10°C +35°C
MLBV-170	+2°C +8°C	600	1020	650	50	172	3	yes	opt.	yes	yes	yes.	yes	opt.	R600a	235	230V-50Hz	+10°C +35°C
MLBV-320	+2°C +8°C	600	1800	650	50	321	5	yes	opt.	yes	yes	yes.	yes	opt.	R600a	265	230V-50Hz	+10°C +35°C

technical and construction characteristics subject to variation without notice

*tests conducted at +25°C

- Inside and outside in white plastic-coated steel.
- Hygienic curved interior for easy cleaning.
- AISI-304 18/8 stainless steel internal rack and guide system, adjustable to 100 mm intervals.
- Fitted with shelves (standard) or drawers (optional) both of which can be pulled out, made of epoxy-coated steel plate, with label holder. Distributed load capacity 100 kg/m³.
- Reversible opening door, double glazing with inert gas insulation, aluminium frame, automatic closing system, and removable magnetic gasket (stays open when opened more than 90°).
- Key lock as standard.
- Twin LED lighting housed in door frame.
- Models 120 and 170 with height-adjustable feet. Model 320 with stainless steel feet.
- Ventilated condensing unit, sound pressure < 60dB.
- Forced air system evaporator, with anti-corrosion epoxy coating.
- Automatic evaporation of defrost water from the evaporator.
- Injected polyurethane insulation: 50 mm, density 40 kg/m³, zero GWP and zero ODP.
- Components to ATEX 014/34/EU and sealed ø12mm feed-through for external probe.

- Digital control:
 - high visibility
 - audible and visual temperature out of series alarms
 - door open, sensor failure and high condensation temperature alarm
 - contact for connecting external alarms to the unit (optional)
 - product simulation probe for better performance management
 - optimised defrosts
 - optional datalogger with Bluetooth or Wi-Fi (specify which)



- model 120: shelf 495x390x40
- model 170: shelf 440x390x40
- model 320: shelf 440x390x40 on stainless steel U-guides

- model 120: drawer 495x390x70
- model 170: drawer 440x390x70
- model 320: drawer 440x390x70 on guides with bearings



MLBV-170 with extra shelves



MLBV-320 with extra shelves and left-hand opening door



MLBV-320 with additional drawers

product images are for illustration purposes only



MLB-120



MLB-170



MLB-320

images shown in the table above are for models with standard equipment and fittings

model	series °C	length (mm)	height (mm)	depth (mm)	insulation (mm)	volume (litres)	shelves	lock	digital control					refrigeration equipment				
									battery 12 h	visual alarm	audible alarm	remote alarm contact	product simulator probe	freeze protection thermostat	gas	consum. W/h	voltage	room temperature*
MLB-120	+2°C +8°C	645	805	640	40	125	2	yes	opt.	yes	yes	yes.	yes	opt.	R290	170	230V-50Hz	+10°C +35°C
MLB-170	+2°C +8°C	600	1020	650	50	172	3	yes	opt.	yes	yes	yes.	yes	opt.	R600a	235	230V-50Hz	+10°C +35°C
MLB-320	+2°C +8°C	600	1800	650	50	321	5	yes	opt.	yes	yes	yes.	yes	opt.	R600a	265	230V-50Hz	+10°C +35°C

technical and construction characteristics subject to variation without notice

*tests conducted at +25°C

- Inside and outside in white plastic-coated steel.
- Hygienic curved interior for easy cleaning.
- AISI-304 18/8 stainless steel internal rack and guide system, adjustable to 100 mm intervals.
- Fitted with shelves (standard) or drawers (optional) both of which can be pulled out, made of epoxy-coated steel plate, with label holder. Distributed load capacity 100 kg/m³.
- Reversible opening door with automatic closing system and removable magnetic gasket (stays open when opened more than 90°).
- Key lock as standard.
- Twin LED lighting housed in door frame.
- Models 120 and 170 with height-adjustable feet. Model 320 with stainless steel feet.
- Ventilated condensing unit, sound pressure < 60dB.
- Forced air system evaporator, with anti-corrosion epoxy coating.
- Automatic evaporation of defrost water from the evaporator.
- Injected polyurethane insulation: 50 mm, density 40 kg/m³, zero GWP and zero ODP.
- Components to ATEX 014/34/EU and sealed ø12mm feed-through for external probe.

- Digital control:
 - high visibility
 - audible and visual temperature out of series alarms
 - door open, sensor failure and high condensation temperature alarm
 - contact for connecting external alarms to the unit (optional)
 - product simulation probe for better performance management
 - optimised defrosts
 - optional datalogger with Bluetooth or Wi-Fi (specify which)

OPTIONS

- additional rack with guides
- drawer with telescopic slides
- Bluetooth datalogger
- Wi-Fi datalogger
- 90 mm feet
- 135 mm feet
- 20 mm adjuster
- wheels
- graphic display panel with USB
- AISI-304 stainless steel finish



MLB-170 with additional drawers



MLB-320 with extra shelves and optional graphic display panel with USB



MLBV-500

MLBV-1200

MLBV-1850

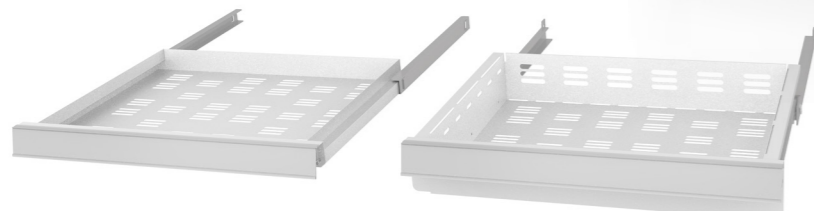
images shown in the table above are for models with standard equipment and fittings

model	series °C	length (mm)	height (mm)	depth (mm)	insulation (mm)	volume (litres)	shelves	lock	digital control					refrigeration equipment				
									battery 12 h	visual alarm	audible alarm	remote alarm contact	product simulator probe	freeze protection thermostat	gas	consum. W/h	voltage	room temperature
MLBV-500	+2°C +8°C	680	2145	730	70	505	6	yes	opt.	yes	yes	yes.	yes	opt.	R290	264	230V-50Hz	+10°C +35°C
MLBV-1200	+2°C +8°C	1370	2145	730	70	1201	12	yes	opt.	yes	yes	yes.	yes	opt.	R290	627	230V-50Hz	+10°C +35°C
MLBV-1850	+2°C +8°C	2055	2145	730	70	1852	18	yes	opt.	yes	yes	yes.	yes	opt.	R290	461	230V-50Hz	+10°C +35°C

technical and construction characteristics subject to variation without notice

*tests conducted at +25°C

- Inside and outside in white plastic-coated steel.
- Inside bottom panel in AISI-304 18/8 stainless steel.
- Interior with hygienic curved base and corners for easy cleaning.
- AISI-304 18/8 stainless steel internal rack and guide system, adjustable to 100 mm intervals.
- Fitted with shelves (standard) or drawers (optional) both of which can be pulled out, made of epoxy-coated steel plate, with label holder. Distributed load capacity 100 kg/m³.
- Reversible opening doors (model 500), with automatic closing system and removable magnetic gasket (stays open when opened more than 90°).
- Double glazed with inert gas insulation, aluminium frame.
- Key lock as standard.
- Twin LED lighting housed in door frame.
- Standard wheels, with front brake. Height 105 mm.
- Ventilated condensing unit, sound pressure < 60dB.
- Forced air system evaporator, with anti-corrosion epoxy coating.
- Automatic evaporation of defrost water from the evaporator.
- Injected polyurethane insulation: 70 mm, density 40 kg/m³, zero GWP and zero ODP.
- Components to ATEX 014/34/EU and sealed ø12mm feed-through for external probe.
- Digital control:
 - compact
 - audible and visual temperature out of series alarms
 - door open, sensor failure and high condensation temperature alarm
 - contact for connecting external alarms to the unit (optional)
 - product simulation probe for better performance management
 - optimised defrosts
 - optional datalogger with Bluetooth or Wi-Fi (specify which)



• shelf 495x460x40 on stainless steel U-guides

• drawer 495x450x70 on stainless steel guides with bearings



MLBV-1850 with optional additional shelves, drawers and adjusters

product images are for illustration purposes only



MLB-500

MLB-1200

MLB-1850

images shown in the table above are for models with standard equipment and fittings

model	series °C	length (mm)	height (mm)	depth (mm)	insulation (mm)	volume (litres)	shelves	lock	digital control					refrigeration equipment				
									battery 12 h	visual alarm	audible alarm	remote alarm contact	product simulator probe	freeze protection thermostat	gas	consum. W/h	voltage	room temperature
MLB-500	+2°C +8°C	680	2145	730	70	505	6	yes	opt.	yes	yes	yes.	yes	opt.	R290	260	230V-50Hz	+10°C +35°C
MLB-1200	+2°C +8°C	1370	2145	730	70	1201	12	yes	opt.	yes	yes	yes.	yes	opt.	R290	396	230V-50Hz	+10°C +35°C
MLB-1850	+2°C +8°C	2055	2145	730	70	1852	18	yes	opt.	yes	yes	yes.	yes	opt.	R290	943	230V-50Hz	+10°C +35°C

technical and construction characteristics subject to variation without notice

*tests conducted at +25°C

- Inside and outside in white plastic-coated steel.
- Inside bottom panel in AISI-304 18/8 stainless steel.
- Interior with hygienic curved base and corners for easy cleaning.
- AISI-304 18/8 stainless steel internal rack and guide system, adjustable to 100 mm intervals.
- Fitted with shelves (standard) or drawers (optional) both of which can be pulled out, made of epoxy-coated steel plate, with label holder. Distributed load capacity 100 kg/m³.
- Reversible opening doors (model 500), with automatic closing system and removable magnetic gasket (stays open when opened more than 90°).
- AISI 3.4 18/8 stainless steel moulded inside door panel.
- Key lock as standard.
- Twin LED lighting housed in door frame.
- Standard wheels, with front brake. Height 105 mm.
- Ventilated condensing unit, sound pressure < 60dB.
- Forced air system evaporator, with anti-corrosion epoxy coating.
- Automatic evaporation of defrost water from the evaporator.
- Injected polyurethane insulation: 70 mm, density 40 kg/m³, zero GWP and zero ODP.
- Components to ATEX 014/34/EU and sealed ø12mm feed-through for external probe.
- Digital control:
 - compact
 - audible and visual temperature out of series alarms
 - door open, sensor failure and high condensation temperature alarm
 - contact for connecting external alarms to the unit (optional)
 - product simulation probe for better performance management
 - optimised defrosts
 - optional datalogger with Bluetooth or Wi-Fi (specify which)



Door with ergonomic handle and stainless steel moulded inside door panel



MLB-1200 with extra shelves, drawers and height adjusters optional

MLB-500 with additional drawers

OPTIONS

- additional rack with guides
- drawer with telescopic slides
- Bluetooth datalogger
- Wi-Fi datalogger
- 90 mm feet
- 135 mm feet
- 20 mm adjuster
- AISI-304 stainless steel finish





MLBV-650



MLBV-1400



MLBV-2200

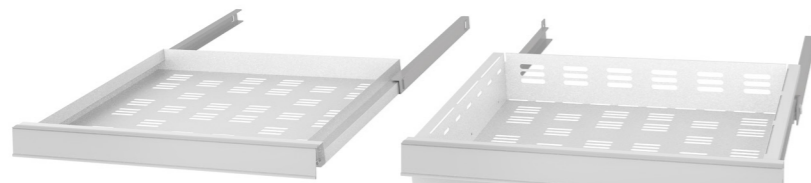
images shown in the table above are for models with standard equipment and fittings

model	series °C	length (mm)	height (mm)	depth (mm)	insulation (mm)	volume (litres)	shelves	lock	digital control					refrigeration equipment				
									battery 12 h	visual alarm	audible alarm	remote alarm contact	product simulator probe	freeze protection thermostat	gas	consum. W/h	voltage	room temperature
MLBV-650	+2°C +8°C	705	2080	850	85	645	6	yes	opt.	yes	yes	yes.	yes	opt.	R290	260	230V-50Hz	+10°C +35°C
MLBV-1400	+2°C +8°C	1395	2080	850	85	1404	12	yes	opt.	yes	yes	yes.	yes	opt.	R290	396	230V-50Hz	+10°C +35°C
MLBV-2200	+2°C +8°C	2055	2080	850	70	2130	18	yes	opt.	yes	yes	yes.	yes	opt.	R290	943	230V-50Hz	+10°C +35°C

technical and construction characteristics subject to variation without notice

*tests conducted at +25°C

- Inside and outside in white plastic-coated steel.
- Inside bottom panel in AISI-304 18/8 stainless steel.
- Interior with hygienic curved base and corners for easy cleaning.
- AISI-304 18/8 stainless steel internal rack and guide system, adjustable to 100 mm intervals.
- Fitted with shelves (standard) or drawers (optional) both of which can be pulled out, made of epoxy-coated steel plate, with label holder. Distributed load capacity 100 kg/m³.
- Reversible opening doors (model 650), with automatic closing system and removable magnetic gasket (stays open when opened more than 90°).
- Double glazed with inert gas insulation, aluminium frame.
- Key lock as standard.
- Twin LED lighting housed in door frame.
- Standard wheels, with front brake. Height 105 mm.
- Ventilated condensing unit, sound pressure < 60dB.
- Forced air system evaporator, with anti-corrosion epoxy coating.
- Automatic evaporation of defrost water from the evaporator.
- Injected polyurethane insulation: 85 mm, density 40 kg/m³, zero GWP and zero ODP.
- Components to ATEX 014/34/EU and sealed ø12mm feed-through for external probe.
- Digital control:
 - high visibility
 - audible and visual temperature out of series alarms
 - door open, sensor failure and high condensation temperature alarm
 - contact for connecting external alarms to the unit (optional)
 - product simulation probe for better performance management
 - optimised defrosts
 - optional datalogger with Bluetooth or Wi-Fi (specify which)

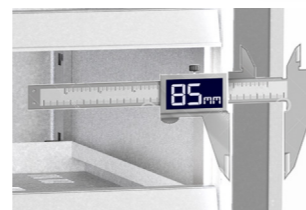


• shelf 495x565x40 on stainless steel U-guides

• drawer 495x560x70 on stainless steel guides in two parts



MLBV-650 with optional drawers and graphic display panel



Models 650 and 1400, insulation thickness on sides 85 mm

product images are for illustration purposes only



MLB-650



MLB-1400



MLB-2200

images shown in the table above are for models with standard equipment and fittings

model	series °C	length (mm)	height (mm)	depth (mm)	insulation (mm)	volume (litres)	shelves	lock	digital control					refrigeration equipment				
									battery 12 h	visual alarm	audible alarm	remote alarm contact	product simulator probe	freeze protection thermostat	gas	consum. W/h	voltage	room temperature
MLB-650	+2°C +8°C	705	2080	850	85	645	6	yes	opt.	yes	yes	yes.	yes	opt.	R290	260	230V-50Hz	+10°C +35°C
MLB-1400	+2°C +8°C	1395	2080	850	85	1404	12	yes	opt.	yes	yes	yes.	yes	opt.	R290	396	230V-50Hz	+10°C +35°C
MLB-2200	+2°C +8°C	2055	2080	850	70	2130	18	yes	opt.	yes	yes	yes.	yes	opt.	R290	943	230V-50Hz	+10°C +35°C

technical and construction characteristics subject to variation without notice

*tests conducted at +25°C

- Inside and outside in white plastic-coated steel.
- Inside bottom panel in AISI-304 18/8 stainless steel.
- Interior with hygienic curved base and corners for easy cleaning.
- AISI-304 18/8 stainless steel internal rack and guide system, adjustable to 100 mm intervals.
- Fitted with shelves (standard) or drawers (optional) both of which can be pulled out, made of epoxy-coated steel plate, with label holder. Distributed load capacity 100 kg/m³.
- Reversible opening doors (model 650), with automatic closing system and removable magnetic gasket (stays open when opened more than 90°).
- AISI 3.4 18/8 moulded stainless steel inside door panel.
- Key lock as standard.
- Twin LED lighting housed in door frame.
- Standard wheels, with front brake. Height 105 mm.
- Ventilated condensing unit, sound pressure < 60dB.
- Forced air system evaporator, with anti-corrosion epoxy coating.
- Automatic evaporation of defrost water from the evaporator.
- Injected polyurethane insulation: 85 mm, density 40 kg/m³, zero GWP and zero ODP.
- Components to ATEX 014/34/EU and sealed ø12mm feed-through for external probe.
- Digital control:
 - high visibility
 - audible and visual temperature out of series alarms
 - door open, sensor failure and high condensation temperature alarm
 - contact for connecting external alarms to the unit (optional)
 - product simulation probe for better performance management
 - optimised defrosts
 - optional datalogger with Bluetooth or Wi-Fi (specify which)



Door with ergonomic handle and stainless steel moulded inside panel

OPTIONS

- additional rack with guides
- drawer with telescopic slides
- Bluetooth datalogger
- Wi-Fi datalogger
- 90 mm feet
- 135 mm feet
- 20 mm adjuster
- graphic display panel with USB
- AISI-304 stainless steel finish



MLB-1400 with extra shelves



MLB-2200 with optional drawers and graphic display panel with USB



MLBC-500

MLBC-1200

MLBC-1850

images shown in the table above are for models with standard equipment and fittings

model	series °C	length (mm)	height (mm)	depth (mm)	insulation (mm)	volume (litres)	shelves	lock	digital control					refrigeration equipment			
									battery 12 h	visual alarm	audible alarm	remote alarm contact	product simulator probe	gas	consum. W/h	voltage	room temperature
MLBC-500	-10°C -30°C	680	2145	730	70	505	6	yes	opt.	yes	yes	yes.	yes	R290	765	230V-50Hz	+10°C +35°C
MLBC-1200	-10°C -30°C	1370	2145	730	70	1201	12	yes	opt.	yes	yes	yes.	yes	R290	1215	230V-50Hz	+10°C +35°C
MLBC-1850	-10°C -30°C	2055	2145	730	70	1852	18	yes	opt.	yes	yes	yes.	yes	R290	1700	230V-50Hz	+10°C +35°C

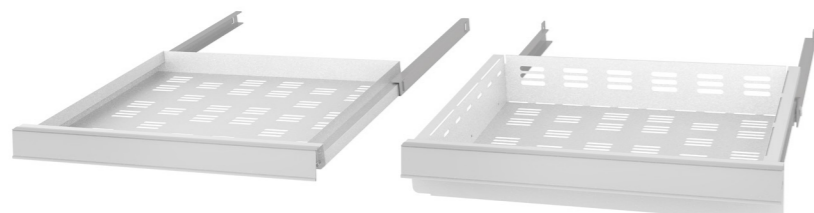
technical and construction characteristics subject to variation without notice

*tests conducted at +25°C

- Inside and outside in white plastic-coated steel.
- Inside bottom panel in AISI-304 18/8 stainless steel.
- Interior with hygienic curved base and corners for easy cleaning.
- Heated door frame edges.
- AISI-304 18/8 stainless steel internal rack and guide system, adjustable to 100 mm intervals.
- Fitted with shelves (standard) or drawers (optional) both of which can be pulled out, made of epoxy-coated steel plate, with label holder. Distributed load capacity 100 kg/m³.
- Reversible opening doors (model 500), with automatic closing system and removable magnetic gasket (stays open when opened more than 90°).
- AISI 3.4 18/8 moulded stainless steel inside door panel.
- Key lock as standard.
- Twin LED lighting housed in door frame.
- Standard wheels, with front brake. Height 105 mm.
- Ventilated condensing unit, sound pressure < 60dB.
- Forced air system evaporator, with anti-corrosion epoxy coating.
- Automatic evaporation of defrost water from the evaporator.
- Injected polyurethane insulation: 70 mm, density 40 kg/m³, zero GWP and zero ODP.
- Components to ATEX 014/34/EU and sealed ø12mm feed-through for external probe.
- Digital control:
 - compact
 - audible and visual temperature out of series alarms
 - door open, sensor failure and high condensation temperature alarm
 - contact for connecting external alarms to the unit (optional)
 - product simulation probe for better performance management
 - optimised defrosts
 - optional datalogger with Bluetooth or Wi-Fi (specify which)



Door with ergonomic handle and stainless steel moulded inside panel



• shelf 495x460x40 on stainless steel U-guides

• drawer 495x450x70 on stainless steel guides with bearings

product images are for illustration purposes only



MLBC-500 with additional drawers



MLBC-1200 with extra shelves, drawers and optional adjusters



MLBC-1850

- OPTIONS**
- additional rack with guides
 - drawer with telescopic slides
 - Bluetooth datalogger
 - Wi-Fi datalogger
 - 90 mm feet
 - 135 mm feet
 - 20 mm adjuster
 - AISI-304 stainless steel finish



MLBC-650

MLBC-1400

MLBC-2200

images shown in the table above are for models with standard equipment and fittings

model	series °C	length (mm)	height (mm)	depth (mm)	insulation (mm)	volume (litres)	shelves	lock	digital control					refrigeration equipment			
									battery 12 h	visual alarm	audible alarm	remote alarm contact	product simulator probe	gas	consum. W/h	voltage	room temperature
MLBC-650	-10°C -30°C	705	2080	850	85	645	6	yes	opt.	yes	yes	yes.	yes	R290	765	230V-50Hz	+10°C +35°C
MLBC-1400	-10°C -30°C	1395	2080	850	85	1404	12	yes	opt.	yes	yes	yes.	yes	R290	1215	230V-50Hz	+10°C +35°C
MLBC-2200	-10°C -30°C	2055	2080	850	70	2130	18	yes	opt.	yes	yes	yes.	yes	R290	1700	230V-50Hz	+10°C +35°C

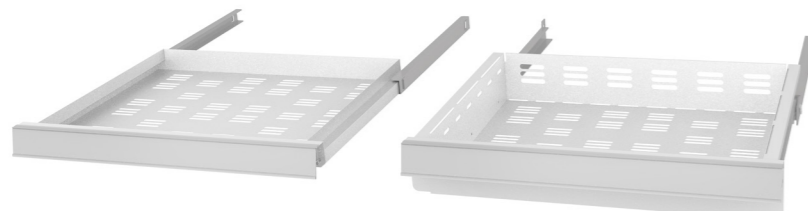
technical and construction characteristics subject to variation without notice

*tests conducted at +25°C

- Inside and outside in white plastic-coated steel.
- Inside bottom panel in AISI-304 18/8 stainless steel.
- Interior with hygienic curved base and corners for easy cleaning.
- Heated door frame edges.
- AISI-304 18/8 stainless steel internal rack and guide system, adjustable to 100 mm intervals.
- Fitted with shelves (standard) or drawers (optional) both of which can be pulled out, made of epoxy-coated steel plate, with label holder. Distributed load capacity 100 kg/m³.
- Reversible opening doors (model 650), with automatic closing system and removable magnetic gasket (stays open when opened more than 90°).
- AISI 3.4 18/8 moulded stainless steel inside door panel.
- Key lock as standard.
- Twin LED lighting housed in door frame.
- Standard wheels, with front brake. Height 105 mm.
- Ventilated condensing unit, sound pressure < 60dB.
- Forced air system evaporator, with anti-corrosion epoxy coating.
- Automatic evaporation of defrost water from the evaporator.
- Injected polyurethane insulation: 85 mm, density 40 kg/m³, zero GWP and zero ODP.
- Components to ATEX 014/34/EU and sealed ø12mm feed-through for external probe.
- Digital control:
 - high visibility
 - audible and visual temperature out of series alarms
 - door open, sensor failure and high condensation temperature alarm
 - contact for connecting external alarms to the unit (optional)
 - product simulation probe for better performance management
 - optimised defrosts
 - optional datalogger with Bluetooth or Wi-Fi (specify which)

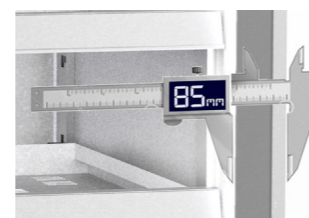


Door with ergonomic handle and stainless steel moulded inside panel



• shelf 495x565x40 on stainless steel U-guides

• drawer 495x560x70 on stainless steel guides with bearings



Models 650 and 1400, insulation thickness on sides 85 mm

product images are for illustration purposes only



MLBC-650 with additional drawers



MLBC-1400 with extra shelves



MLBC-2200 with optional drawers and graphic display panel with USB

OPTIONS

- additional rack with guides
- drawer with telescopic slides
- Bluetooth datalogger
- Wi-Fi datalogger
- 90 mm feet
- 135 mm feet
- 20 mm adjuster
- graphic display panel with USB
- AISI-304 stainless steel finish



product images are for illustration purposes only



SIGMA DIN 58345
120 - 170 - 320 litres

Page **24-25** Glass door cabinets
Page **26-27** Windowless door cabinets



ALPHA DIN 58345
500 - 1200- 1850 litres

Page **28-29** Glass door cabinets
Page **30-31** Windowless door cabinets



PRO DIN 58345
650 - 1400- 2200 litres

Page **32-33** Glass door cabinets
Page **34-35** Windowless door cabinets

The **DIN 58345** standard specifies special requirements for refrigerators used to store thermolabile products such as vaccines and some medicines.

- Temperature series +2°C and +8°C (can be monitored).
- Room temperature between +10°C to +35°C.
- Easy to clean and disinfect cabinet.
- Drawers and shelves must support a uniform load of 100 kg/m².
- Lockable to prevent accidental door opening.
- Power failure alarm must continue for at least twelve hours.
- Visual and audible alarm for temperature outside operating series.
- Current-free alarm contact.
- Safety device to prevent temperature dropping below +2°C.



MPHV-120



MPHV-170



MPHV-320

images shown in the table above are for models with standard equipment and fittings

model	series °C	length (mm)	height (mm)	depth (mm)	insulation (mm)	volume (litres)	shelves	lock	digital control						refrigeration equipment			
									battery 12 h	visual alarm	audible alarm	remote alarm contact	product simulator probe	freeze protection thermostat	gas	consum. W/h	voltage	room temperature*
MPHV-120	+2°C +8°C	645	805	640	40	125	2	yes	yes	yes	yes	yes	yes	yes	R290	170	230V-50Hz	+10°C +35°C
MPHV-170	+2°C +8°C	600	1020	650	50	172	3	yes	yes	yes	yes	yes	yes	R600a	235	230V-50Hz	+10°C +35°C	
MPH-V320	+2°C +8°C	600	1800	650	50	321	5	yes	yes	yes	yes	yes	yes	R600a	265	230V-50Hz	+10°C +35°C	

technical and construction characteristics subject to variation without notice

*tests conducted at +25°C

- Inside and outside in white plastic-coated steel.
- Hygienic curved interior for easy cleaning.
- AISI-304 18/8 stainless steel internal rack and guide system, adjustable to 100 mm intervals.
- Fitted with shelves (standard) or drawers (optional) both of which can be pulled out, made of epoxy-coated steel plate, with label holder. Distributed load capacity 100 kg/m³.
- Reversible opening door, double glazing with inert gas insulation, aluminium frame, automatic closing system, and removable magnetic gasket (stays open when opened more than 90°).
- Key lock as standard.
- Twin LED lighting housed in door frame.
- Models 120 and 170 with height-adjustable feet. Model 320 with stainless steel feet.
- Adjustable feet to level the unit on the floor.
- Ventilated condensing unit, sound pressure < 60dB.
- Forced air system evaporator, with anti-corrosion epoxy coating.
- Automatic evaporation of defrost water from the evaporator.
- Injected polyurethane insulation: 50 mm, density 40 kg/m³, zero GWP and zero ODP.
- Components to ATEX 014/34/EU and sealed ø12mm feed-through for external probe.
- Digital control:
 - high visibility
 - 12-hour lithium battery with charger
 - audible and visual temperature out of series alarms
 - door open, sensor failure and high condensation temperature alarm
 - contact for connecting external alarms to the unit
 - product simulation probe for better performance management
 - safety thermostat. Prevents temperature falling to the freezing point of thermolabile product
 - optimised defrosts
 - optional datalogger with Bluetooth or Wi-Fi (specify which)



- model 120: shelf 495x390x40
- model 170: shelf 440x390x40
- model 320: shelf 440x390x40 on stainless steel U-guides

- model 120: drawer 495x390x70
- model 170: drawer 440x390x70
- model 320: drawer 440x390x70 on guides with bearings



MPHV-170 optional with drawers and wheels



MPHV-320 with extra shelves and left-hand opening door



MPHV-320 with additional drawers

product images are for illustration purposes only



MPHV-120 with extra shelves



MPHV-170 with extra shelves and optional feet



MPHV-320 optional drawers and graphic display panel



MPHV-320 with optional additional shelves and wheels

OPTIONS

- additional rack with guides
- drawer with telescopic slides
- Bluetooth datalogger
- Wi-Fi datalogger
- 90 mm feet
- 135 mm feet
- 20 mm adjuster
- wheels
- graphic display panel with USB
- AISI-304 stainless steel finish



MPH-120

MPH-170

MPH-320

images shown in the table above are for models with standard equipment and fittings

model	series °C	length (mm)	height (mm)	depth (mm)	insulation (mm)	volume (litres)	shelves	lock	digital control						refrigeration equipment			
									battery 12 h	visual alarm	acoustic alarm	remote alarm contact	product simulator probe	freeze protection thermostat	gas	consum. W/h	voltage	room temperature*
MPH-120	+2°C +8°C	645	805	640	40	125	2	yes	yes	yes	yes	yes	yes	yes	R290	170	230V-50Hz	+10°C +35°C
MPH-170	+2°C +8°C	600	1020	650	50	172	3	yes	yes	yes	yes	yes	yes	R600a	235	230V-50Hz	+10°C +35°C	
MPH-320	+2°C +8°C	600	1800	650	50	321	5	yes	yes	yes	yes	yes	yes	R600a	265	230V-50Hz	+10°C +35°C	

technical and construction characteristics subject to variation without notice

*tests conducted at +25°C

- Inside and outside in white plastic-coated steel.
- Hygienic curved interior for easy cleaning.
- AISI-304 18/8 stainless steel internal rack and guide system, adjustable to 100 mm intervals.
- Fitted with shelves (standard) or drawers (optional) both of which can be pulled out, made of epoxy-coated steel plate, with label holder. Distributed load capacity 100 kg/m³.
- Reversible opening door with automatic closing system and removable magnetic gasket (stays open when opened more than 90°).
- Key lock as standard.
- Twin LED lighting housed in door frame.
- Models 120 and 170 with height-adjustable feet. Model 320 with stainless steel feet.
- Adjustable feet to level the unit on the floor.
- Ventilated condensing unit, sound pressure < 60dB.
- Forced air system evaporator, with anti-corrosion epoxy coating.
- Automatic evaporation of defrost water from the evaporator.
- Injected polyurethane insulation: 50 mm, density 40 kg/m³, zero GWP and zero ODP.
- Components to ATEX 014/34/EU and sealed ø12mm feed-through for external probe.
- Digital control:
 - high visibility
 - 12-hour lithium battery with charger
 - audible and visual temperature out of series alarms
 - door open, sensor failure and high condensation temperature alarm
 - contact for connecting external alarms to the unit
 - product simulation probe for better performance management
 - safety thermostat. Prevents temperature falling to the freezing point of thermolabile product
 - optimised defrosts
 - optional datalogger with Bluetooth or Wi-Fi (specify which)



- model 120: shelf 495x390x40
- model 170: shelf 440x390x40
- model 320: shelf 440x390x40 on stainless steel U-guides

- model 120: drawer 495x390x70
- model 170: drawer 440x390x70
- model 320: drawer 440x390x70 on guides with bearings



MPH-170 with additional drawers



MPH-320 with extra shelves

product images are for illustration purposes only



MPH-120 with extra shelves



MPH-170 with extra shelves



MPH-320 with three optional drawers, wheels and graphic display panel with USB

OPTIONS

- additional rack with guides
- drawer with telescopic slides
- Bluetooth datalogger
- Wi-Fi datalogger
- 90 mm feet
- 135 mm feet
- 20 mm adjuster
- wheels
- graphic display panel with USB
- AISI-304 stainless steel finish



MPHV-500

MPHV-1200

MPHV-1850

images shown in the table above are for models with standard equipment and fittings

model	series °C	length (mm)	height (mm)	depth (mm)	insulation (mm)	volume (litres)	shelves	lock	digital control						refrigeration equipment			
									battery 12 h	visual alarm	audible alarm	remote alarm contact	product simulator probe	freeze protection thermostat	gas	consum. W/h	voltage	room temperature
MPHV-500	+2°C +8°C	680	2145	730	70	505	6	yes	yes	yes	yes	yes	yes	yes	R290	264	230V-50Hz	+10°C +35°C
MPHV-1200	+2°C +8°C	1370	2145	730	70	1201	12	yes	yes	yes	yes	yes	yes	R290	627	230V-50Hz	+10°C +35°C	
MPHV-1850	+2°C +8°C	2055	2145	730	70	1852	18	yes	yes	yes	yes	yes	yes	R290	461	230V-50Hz	+10°C +35°C	

technical and construction characteristics subject to variation without notice

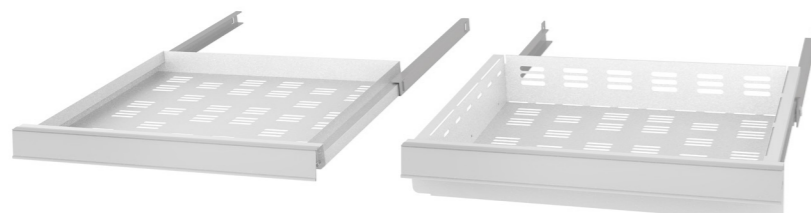
*tests conducted at +25°C

- Inside and outside in white plastic-coated steel.
- Inside bottom panel in AISI-304 18/8 stainless steel.
- Interior with hygienic curved base and corners for easy cleaning.
- AISI-304 18/8 stainless steel internal rack and guide system, adjustable to 100 mm intervals.
- Fitted with shelves (standard) or drawers (optional) both of which can be pulled out, made of epoxy-coated steel plate, with label holder. Distributed load capacity 100 kg/m³.
- Reversible opening doors (model 500), with automatic closing system and removable magnetic gasket (stays open when opened more than 90°).
- Double glazed with inert gas insulation, aluminium frame.
- Key lock as standard.
- Twin LED lighting housed in door frame.
- Standard wheels, with front brake. Height 105 mm.
- Ventilated condensing unit, sound pressure < 60dB.
- Forced air system evaporator, with anti-corrosion epoxy coating.
- Automatic evaporation of defrost water from the evaporator.
- Injected polyurethane insulation: 70 mm, density 40 kg/m³, zero GWP and zero ODP.
- Components to ATEX 014/34/EU and sealed ø12mm feed-through for external probe
- Digital control:
 - compact
 - 12-hour lithium battery with charger
 - audible and visual temperature out of series alarms
 - door open, sensor failure and high condensation temperature alarm
 - contact for connecting external alarms to the unit
 - product simulation probe for better performance management
 - safety thermostat. Prevents temperature falling to the freezing point of thermolabile product
 - optimised defrosts
 - optional datalogger with Bluetooth or Wi-Fi (specify which)



Double glazed, aluminium frame

Shelves or drawers on guides and stainless steel structure



• shelf 495x460x40 on stainless steel U-guides

• drawer 495x450x70 on stainless steel guides with bearings

product images are for illustration purposes only



MPHV-500 with additional drawers



MPHV-1200 with additional shelves and optional feet



MPHV-1850 with optional additional shelves, drawers and adjusters

OPTIONS

- additional rack with guides
- drawer with telescopic slides
- Bluetooth datalogger
- Wi-Fi datalogger
- 90 mm feet
- 135 mm feet
- 20 mm adjuster
- AISI-304 stainless steel finish

vaccines and medicines +2°C +8°C PHARMACY



MPH-500

MPH-1200

MPH-1850

images shown in the table above are for models with standard equipment and fittings

model	series °C	length (mm)	height (mm)	depth (mm)	insulation (mm)	volume (litres)	shelves	lock	digital control						refrigeration equipment			
									battery 12 h	visual alarm	audible alarm	remote alarm contact	product simulator probe	freeze protection thermostat	gas	consum. W/h	voltage	room temperature
MPH-500	+2°C +8°C	680	2145	730	70	505	6	yes	yes	yes	yes	yes	yes	yes	R290	264	230V-50Hz	+10°C +35°C
MPH-1200	+2°C +8°C	1370	2145	730	70	1201	12	yes	yes	yes	yes	yes	yes	R290	627	230V-50Hz	+10°C +35°C	
MPH-1850	+2°C +8°C	2055	2145	730	70	1852	18	yes	yes	yes	yes	yes	yes	R290	461	230V-50Hz	+10°C +35°C	

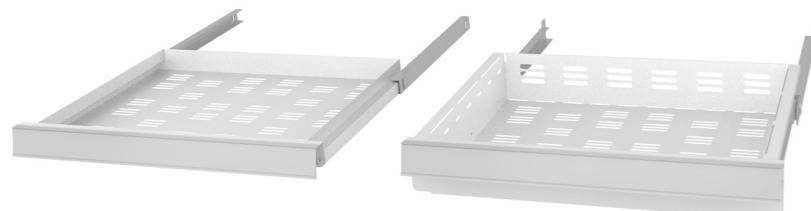
technical and construction characteristics subject to variation without notice

*tests conducted at +25°C

- Inside and outside in white plastic-coated steel.
- Inside bottom panel in AISI-304 18/8 stainless steel.
- Interior with hygienic curved base and corners for easy cleaning.
- AISI-304 18/8 stainless steel internal rack and guide system, adjustable to 100 mm intervals.
- Fitted with shelves (standard) or drawers (optional) both of which can be pulled out, made of epoxy-coated steel plate, with label holder. Distributed load capacity 100 kg/m³.
- Reversible opening doors (model 500), with automatic closing system and removable magnetic gasket (stays open when opened more than 90°).
- AISI 3.4 18/8 moulded stainless steel inside door panel.
- Key lock as standard.
- Twin LED lighting housed in door frame.
- Standard wheels, with front brake. Height 105 mm.
- Ventilated condensing unit, sound pressure < 60dB.
- Forced air system evaporator, with anti-corrosion epoxy coating.
- Automatic evaporation of defrost water from the evaporator.
- Injected polyurethane insulation: 70 mm, density 40 kg/m³, zero GWP and zero ODP.
- Components to ATEX 014/34/EU and sealed ø12mm feed-through for external probe.
- Digital control:
 - compact
 - 12-hour lithium battery with charger
 - audible and visual temperature out of series alarms
 - door open, sensor failure and high condensation temperature alarm
 - contact for connecting external alarms to the unit
 - product simulation probe for better performance management
 - safety thermostat. Prevents temperature falling to the freezing point of thermolabile product
 - optimised defrosts
 - optional datalogger with Bluetooth or Wi-Fi (specify which)



Door with ergonomic handle and stainless steel moulded inside panel



• shelf 495x460x40 on stainless steel U-guides

• drawer 495x450x70 on stainless steel guides with bearings

product images are for illustration purposes only



MPH-500 with additional drawers



MPH-1200 with extra shelves, drawers and optional adjusters



MPH-1850

- OPTIONS**
- additional rack with guides
 - drawer with telescopic slides
 - Bluetooth datalogger
 - Wi-Fi datalogger
 - 90 mm feet
 - 135 mm feet
 - 20 mm adjuster
 - AISI-304 stainless steel finish



product images are for illustration purposes only



images shown in the table above are for models with standard equipment and fittings

model	series °C	length (mm)	height (mm)	depth (mm)	insulation (mm)	volume (litres)	shelves	lock	digital control					refrigeration equipment				
									battery 12 h	visual alarm	audible alarm	remote alarm contact	product simulator probe	freeze protection thermostat	gas	consum. W/h	voltage	room temperature
MPHV-650	+2°C +8°C	705	2080	850	85	645	6	yes	yes	yes	yes	yes	yes	yes	R290	260	230V-50Hz	+10°C +35°C
MPHV-1400	+2°C +8°C	1395	2080	850	85	1404	12	yes	yes	yes	yes	yes	yes	yes	R290	396	230V-50Hz	+10°C +35°C
MPHV-2200	+2°C +8°C	2055	2080	850	70	2130	18	yes	yes	yes	yes	yes	yes	yes	R290	943	230V-50Hz	+10°C +35°C

technical and construction characteristics subject to variation without notice

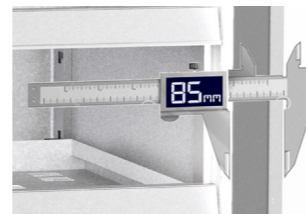
*tests conducted at +25°C

- Inside and outside in white plastic-coated steel.
- Inside bottom panel in AISI-304 18/8 stainless steel.
- Interior with hygienic curved base and corners for easy cleaning.
- AISI-304 18/8 stainless steel internal rack and guide system, adjustable to 100 mm intervals.
- Fitted with shelves (standard) or drawers (optional) both of which can be pulled out, made of epoxy-coated steel plate, with label holder. Distributed load capacity 100 kg/m³.
- Reversible opening doors (model 650), with automatic closing system and removable magnetic gasket (stays open when opened more than 90°).
- Double glazed with inert gas insulation, aluminium frame.
- Key lock as standard.
- Twin LED lighting housed in door frame.
- Standard wheels, with front brake. Height 105 mm.
- Ventilated condensing unit, sound pressure < 60dB.
- Forced air system evaporator, with anti-corrosion epoxy coating.
- Automatic evaporation of defrost water from the evaporator.
- Injected polyurethane insulation: 85 mm, density 40 kg/m³, zero GWP and zero ODP.
- Components to ATEX 014/34/EU and sealed ø12mm feed-through for external probe.
- Digital control:
 - compact
 - 12-hour lithium battery with charger
 - audible and visual temperature out of series alarms
 - door open, sensor failure and high condensation temperature alarm
 - contact for connecting external alarms to the unit
 - product simulation probe for better performance management
 - safety thermostat. Prevents temperature falling to the freezing point of thermolabile product
 - optimised defrosts
 - optional datalogger with Bluetooth or Wi-Fi (specify which)

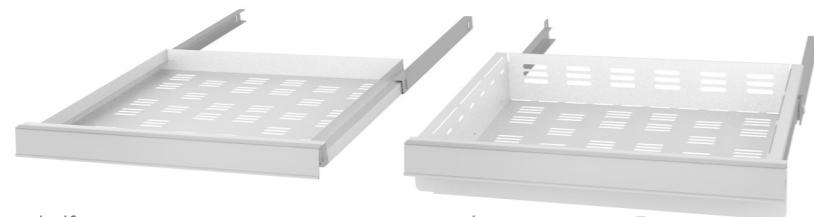


Double glazed, aluminium frame

Shelves or drawers on guides and stainless steel structure



Models 650 and 1400, insulation thickness on sides 85 mm



• shelf 495x565x40 on stainless steel U-guides

• drawer 495x560x70 on stainless steel guides with bearings



MPHV-2200 with extra shelves

OPTIONS

- additional rack with guides
- drawer with telescopic slides
- Bluetooth datalogger
- Wi-Fi datalogger
- 90 mm feet
- 135 mm feet
- 20 mm adjuster
- graphic display panel with USB
- AISI-304 stainless steel finish



product images are for illustration purposes only



images shown in the table above are for models with standard equipment and fittings

model	series °C	length (mm)	height (mm)	depth (mm)	insulation (mm)	volume (litres)	shelves	lock	digital control					refrigeration equipment				
									battery 12 h	visual alarm	audible alarm	remote alarm contact	product simulator probe	freeze protection thermostat	gas	consum. W/h	voltage	room temperature
MPH-650	+2°C +8°C	705	2080	850	85	645	6	yes	yes	yes	yes	yes	yes	yes	R290	260	230V-50Hz	+10°C +35°C
MPH-1400	+2°C +8°C	1395	2080	850	85	1404	12	yes	yes	yes	yes	yes	yes	yes	R290	396	230V-50Hz	+10°C +35°C
MPH-2200	+2°C +8°C	2055	2080	850	70	2130	18	yes	yes	yes	yes	yes	yes	yes	R290	943	230V-50Hz	+10°C +35°C

technical and construction characteristics subject to variation without notice **tests conducted at +25°C*

- Inside and outside in white plastic-coated steel.
- Inside bottom panel in AISI-304 18/8 stainless steel.
- Interior with hygienic curved base and corners for easy cleaning.
- AISI-304 18/8 stainless steel internal rack and guide system, adjustable to 100 mm intervals.
- Fitted with shelves (standard) or drawers (optional) both of which can be pulled out, made of epoxy-coated steel plate, with label holder. Distributed load capacity 100 kg/m³.
- Reversible opening doors (model 650), with automatic closing system and removable magnetic gasket (stays open when opened more than 90°).
- AISI 3.4 18/8 moulded stainless steel inside door panel.
- Key lock as standard.
- Twin LED lighting housed in door frame.
- Standard wheels, with front brake. Height 105 mm.
- Ventilated condensing unit, sound pressure < 60dB.
- Forced air system evaporator, with anti-corrosion epoxy coating.
- Automatic evaporation of defrost water from the evaporator.
- Injected polyurethane insulation: 85 mm, density 40 kg/m³, zero GWP and zero ODP.
- Components to ATEX 014/34/EU and sealed Ø12mm feed-through for external probe.
- Digital control:
 - compact
 - 12-hour lithium battery with charger
 - audible and visual temperature out of series alarms
 - door open, sensor failure and high condensation temperature alarm
 - contact for connecting external alarms to the unit
 - product simulation probe for better performance management
 - safety thermostat. Prevents temperature falling to the freezing point of thermolabile product
 - optimised defrosts
 - optional datalogger with Bluetooth or Wi-Fi (specify which)

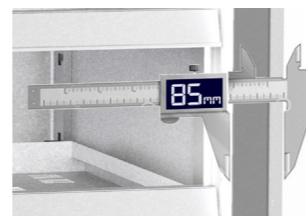


Door with ergonomic handle and stainless steel moulded inside panel



• shelf 495x565x40 on stainless steel U-guides

• drawer 495x560x70 on stainless steel guides with bearings



Models 650 and 1400, insulation thickness on sides 85 mm



MPH-2200 with optional drawers and graphic display panel with USB

- OPTIONS**
- additional rack with guides
 - drawer with telescopic slides
 - Bluetooth datalogger
 - Wi-Fi datalogger
 - 90 mm feet
 - 135 mm feet
 - 20 mm adjuster
 - graphic display panel with USB
 - AISI-304 stainless steel finish

vaccines and medicines +2°C +8°C PHARMACY



CORECO www.coreco.es

Ctra. Córdoba Málaga, Km. 80´800
14900 Lucena / Córdoba / España
Tl. +34 957 502 275
Fax +34 957 502 304

